

AURORA

EMU-2

AX595 Emulator User's Guide

Introduction

- The EMU-2 Emulator is software that electronically emulates the operation of the AX595 scientific calculator.
- It is designed for use with PC's, projectors and whiteboards enabling them to display a fully working version of the calculator that can be seen by a whole class and operated by the teacher/student either via their PC or interactively via the whiteboard.
- You can also display the LCD screen of the calculator in a separate window, which can be resized as required.
- An image of the LCD screen can also be captured and copied to other files from the Windows clipboard.

■ Copyright Statement

- This software is protected by copyright. It is licensed for use on a single site basis and can be used by an unlimited number of users on the site. The software can be installed on an unlimited number of PC's on the site or loaded onto a server and made available across the sites network.

■ Setup

- To setup the emulator on your PC or server copy the entire folder called 'AX595-EmulatorV0.7' from the CD and paste into your preferred location on your PC or server.
- This software will not work directly from the CD-Rom, the folder has to be saved to a PC or server in order to work correctly.

■ Using This Manual

- The screen shots shown in this manual are all from Windows Vista.
- Note that actual appearance of the screen display by this software depends on your computer system setup and on the operating system you are using.
- Display examples shown in this User's Guide are intended for illustrative purposes only. The actual text and values that appear on display may differ from the examples shown in this User's Guide.

■ System Requirements

Operating Systems: Windows[®] 2000; Windows[®] XP Professional; Windows[®] XP Home Edition;
Windows[®] Vista; Windows 7; Windows 8

CPU: Processor 1GHZ(min) RAM 512MB(MIN)

Disk Space: 25MB

Monitor: Screen resolution 1280*800 (min)

Note: Actual requirements and product functionality may vary based on your system configuration and operating system.

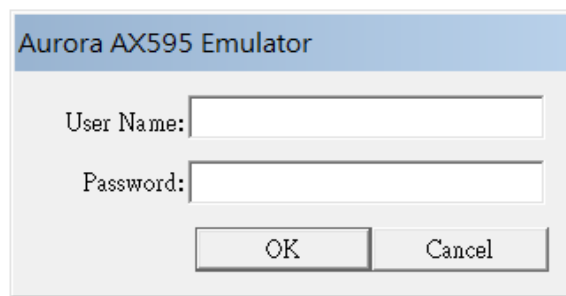
Contents

AX595 PC Emulator	Page
1.To Start Up the Emulator	4
2. Emulator Operation	5
3. Emulator Shortcut Menu.....	6
4. Moving the Emulator and Pop-up Display	7
5. Capture Outer Frame Function.....	8
6. Exiting and Re-running	8

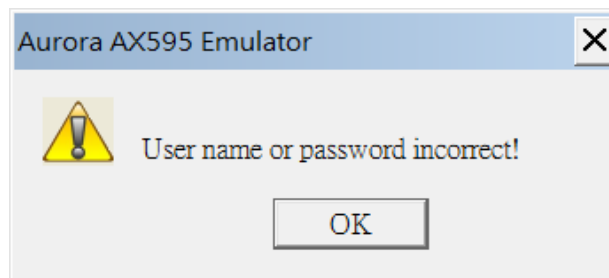
AX595 PC Emulator

1.To start up the emulator

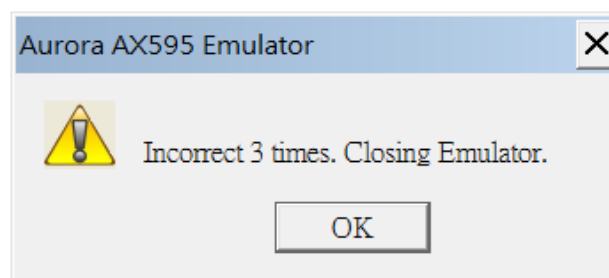
- Firstly locate the folder you have installed from the CD on your PC or server, and open the folder. Locate the application file in this folder named 'Aurora AX595 Emulator' and double click to open. The application will then run.
- Users need to input a user name and password to start using the emulator.
When you click the Aurora AX595 Emulator application you get the below prompt.



If users input an incorrect user name or password then they will get a "Username or password incorrect!" prompt. (Below)



If you input an incorrect username or password 3 times in a row the below prompt will be displayed and the emulator will close. You will need to open the AX595 emulator application again to restart the process.



The User name is: aurora

The Password is: ax595

When you have successfully opened the emulator a calculator that is 1.5 times the size of the actual calculator will appear on your screen. (As shown below)



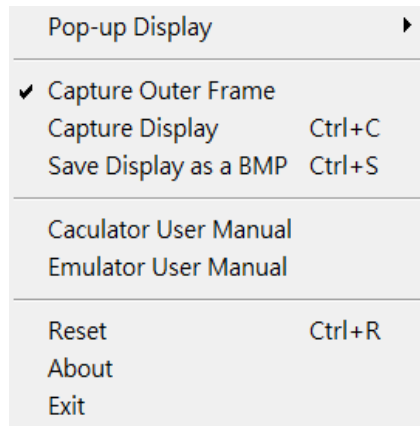
2. Emulator Operation

- To operate the virtual calculator on your computer screen simply click on the required on-screen keys with your mouse.
- You can also perform the following key operations on your computer keyboard.

Computer Key board	Calculator Key
0~9	0~9
+, -, *, /	+, -, \times , \div
Enter	=
\uparrow , \downarrow , \leftarrow , \rightarrow	\blacktriangle , \blacktriangledown , \blacktriangleleft , \blacktriangleright
Space	CA
Backspace key, Del	DEL
PgUp	Pop-up display size up.
PgDn	Pop-up display size down.
Ctrl+C	Capture Display
Ctrl+S	Save Display as a BMP

3. Emulator shortcut menu

- Right clicking with your mouse on the emulator, will display a shortcut menu as below.



- Explanation of shortcut menu.

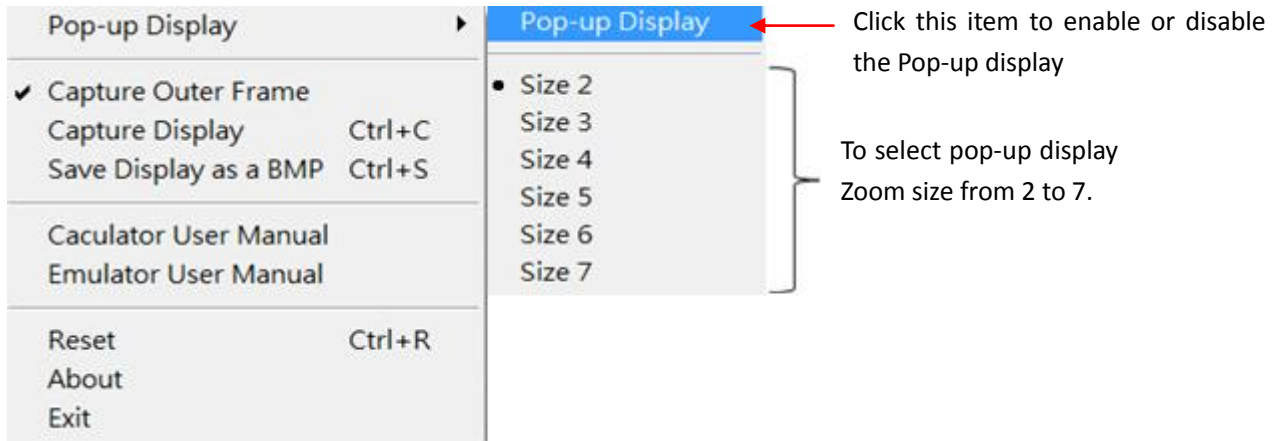
Pop-up Display ▶	Enables/disables the pop-up display box and enters the sub menu for the pop-up display box settings
Capture Outer Frame	When using the capture display option this setting allows you to turn on and off an outer frame for the captured display. (See capture outer frame function)
Capture Display Ctrl+C	Clicking this option captures a copy of what is currently displayed on the calculator screen to your PC's Clipboard. To copy this into another file simply right click and paste.
Save Display as a BMP Ctrl+S	Clicking this option captures a copy of what is currently displayed on the calculator screen and allows you to save it as a BMP file. The default directory is "Document\Capture Display", but this can be changed.
Calculator User Manual	Clicking this option takes you to the stored copy of the AX595 instruction manual located in the same folder as the emulator file, you will need Adobe reader to view this PDF file.
Emulator User Manual	Clicking this option takes you to the stored copy of the Emulator instruction manual (This document) located in the same folder as the emulator file, you will need Adobe reader to view this PDF file.
Reset	Clicking this clears all the settings to the original default values.
About	Version and copyright details.
Exit	Exit the Emulator

- Sub function menu for Pop-up Display

When you click on the Pop-Up display option a sub menu will appear as below

To turn the pop us display on and off simply click on the pop-up display option in the sub menu, a tick will appear to the left of this option when it is turned on.

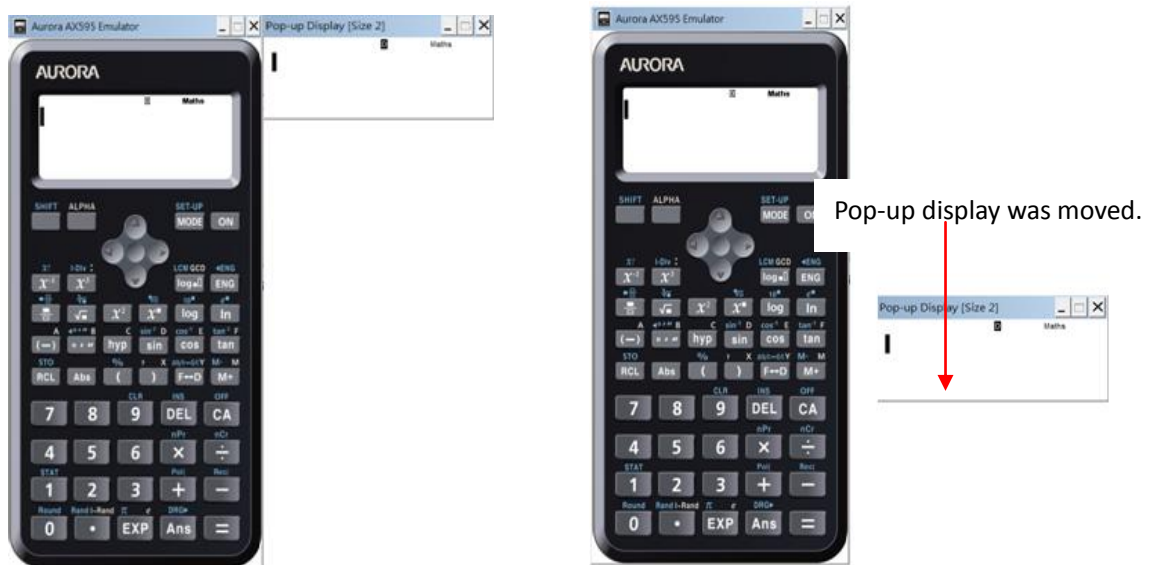
You can also adjust the size of the pop-up display box from X2 zoom to X7 zoom simply click on the option you prefer.



4. Moving the emulator and Pop-up Display

The emulator can be moved around the screen simply by click-holding the title bar of the emulator just above the image of the calculator, you can simply move the emulator with your mouse whilst click-holding to your desired on-screen location.

When you first open a pop-up display its position on-screen is to the immediate right of the emulator and it will move with the emulator if you move the emulator, to reposition the pop-up display without moving the emulator click-hold the title bar of the pop-up display and move it to your desired location.



5. Capture Outer Frame function

Capture Outer Frame=Off

123+456
579

Maths ▲

Capture Outer Frame=ON

123+456
579

Maths ▲

6. Exiting and Re-running

To exit the emulator simply click on the X in the top right hand corner which closes the program, you can also minimize the emulator to your tool bar by clicking on the _ to the left of the X. You can also close or minimize the pop-up window in the same way.

If you attempt to re-start the emulator while it is already running the below warning message will be displayed.

